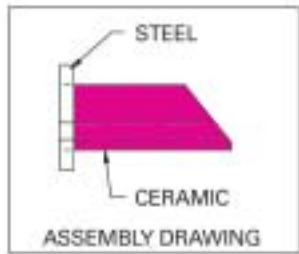


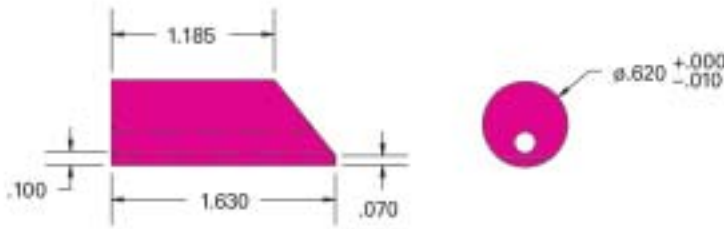
# HE ANIUM Wire Counter Inserts

Standard tolerances on all dimensions are  $\pm 0.010$  inch or  $\pm 1.5\%$ , whichever is greater. Diamond grind and/or hone to  $\pm 0.0005$  inches is available.

Heanium is ideally suited as a wire footage counter due to its superior wear resistance. Various lengths and inside diameters are available. Additional standard and custom parts are also available. Contact our **technical sales** for more information.



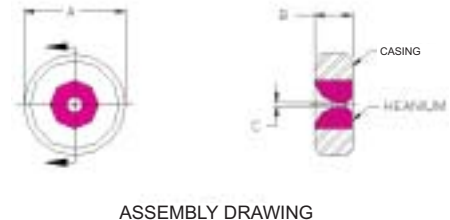
| PART NUMBER | INSIDE DIAMETER |      | LENGTH |      |
|-------------|-----------------|------|--------|------|
|             | A               | B    | A      | B    |
|             | INCHES          | MM.  | INCHES | MM.  |
| WMD-625-1   | 0.156           | 4.0  | 1.185  | 30.1 |
| WMD-625-2   | 0.281           | 7.1  | 1.185  | 30.1 |
| WMD-625-3   | 0.375           | 9.5  | 1.185  | 30.1 |
| WMD-625-4   | 0.500           | 12.7 | 1.156  | 29.4 |
| WMD-625-5   | 0.125           | 3.2  | 1.185  | 30.1 |



# HE ANIUM Ceramic Dies

All ceramic dies are finished to your exact specifications using state-of-the-art equipment. Special dies, including split configurations, can be provided to meet the specific requirements for bunching, stranding, tinning, respooling, and other guiding or wiping applications.

| PART NUMBER | CASING DIAMETER |           | CASING HEIGHT |             | INSIDE DIA. RANGE |            |
|-------------|-----------------|-----------|---------------|-------------|-------------------|------------|
|             | A               | B         | A             | B           | C                 |            |
|             | INCHES          | MM.       | INCHES        | MM.         | INCHES            | MM.        |
| R-3         | 1               | 25.4      | 1/2 - 9/16    | 12.7 - 14.3 | .010 - .190       | .3 - 4.8   |
| R-3-G       | 1               | 25.4      | 5/16 - 3/8    | 7.9 - 9.5   | .010 - .190       | .3 - 4.8   |
| R-5         | 1 — 1 1/2       | 25.4-38.1 | 3/4 - 7/8     | 19.1 - 22.2 | .025 - .300       | .6 - 7.6   |
| R-7         | 1 1/2           | 38.1      | 7/8 - 15/16   | 22.2 - 23.8 | .025 - .425       | .6 - 10.8  |
| R-8         | 2               | 50.8      | 1 - 1 1/8     | 25.4 - 28.6 | .062 - .520       | 1.6 - 13.2 |
| R-8         | 3               | 76.2      | 1/2 - 1 3/4   | 38.1 - 44.4 | .062 - .520       | 1.6 - 13.2 |
| R-11        | 3               | 76.2      | 1 3/4 - 2     | 44.4 - 50.8 | .062 - 1.250      | 1.6 - 31.8 |



\* Standard tolerance on inside diameter +/- .0003  
 \* Standard finish on inside diameter RA 12 in microinches